



R | J

**P O S T
M O D E R N**

ECHO PARK

Characteristics

Content: 100% Calf Leather

Dye Method: Semi-Transparent
aniline dye pigmentation

Weight: 3.5 oz/sf (1068 gr/sm)

Hide Size: 20-25 square feet Hide

Thickness: 1.2-1.4 millimeters

Country of Origin: Italy

Note: This material exhibits natural
markings and inherent colour and textural
variations.

COLOURS



PATTERNS



STACCATO

BRIDGE

TRANSIT

BERLIN

ARRAN

CONFETTI

* In case of embossing you will have a repeat line every 150 cm





PAVONI

R | J

P O S T
M O D E R N

TECHNICAL PRODUCT SHEET (*Scheda Tecnica di prodotto*)

Article (<i>Articolo</i>)	<u>ECHO PARK</u>
Thickness (<i>Spessore</i>)	1.2 – 1.4 mm
Raw Material (<i>Tipo di Pelle</i>)	<u>Cow</u> (<i>Bovina</i>)
Origin (<i>Provenienza</i>)	Italy
Average Size (<i>Taglia</i>)	22-25 sq ft (<i>Pq</i>) Half hide
Tan Type (<i>Tipo Concia</i>)	<i>Chrome Tanning (Concia al Cromo)</i>
Finish Type (<i>Tipo Rifinitzione</i>)	<i>Pigmented (Pigmentata)</i>
Embossing (<i>Stampa</i>)	<i>No Emboss (senza stampa)</i>
Apparence (<i>Aspetto</i>)	Conform to the Master

PHYSICAL CHARACTERISTICS

Caratteristiche Fisiche

Rubbing test (UNI EN ISO 11640) <i>Solidità allo strofinio</i>	500 dry felt cycles (<i>cicli a secco</i>) ≥ 4 grey scale (<i>scala dei grigi</i>) 250 wet felt cycles (<i>cicli ad umido</i>) ≥ 4 grey scale (<i>scala dei grigi</i>)
Measurement of tensile strength (UNI EN ISO 3376) <i>Resistenza alla trazione</i>	≥ 12 N/mm ²
Tear Resistance (UNI EN ISO 3377-2) <i>Resistenza allo strappo</i>	≥ 1200 N
Finish Adesion (UNI EN ISO 11644) <i>Adesione della rifinitzione</i>	≥ 3.0 N/10mm
Abrasion Resistance (UNI EN ISO 5402-1) <i>Resistenza all'abrasione</i>	80.000 dry cycles (<i>cicli a secco</i>) 20.000 wet cycles (<i>cicli ad umido</i>)
Flower stretching at cracking - ball method (UNI EN ISO 3379) <i>distensione del Fiore alla screpolatura (metodo della biglia)</i>	≥ 7 mm
Flammability	CAL TB-117 (2013, Sec. 1) BS 5852:1979 (source 0-1) BS EN 1021-1-2:2006

RYAN | JACKSON



R | J

**P O S T
M O D E R N**

MALIBU

Characteristics

Content: 100% Nubuck Calf Leather

Dye Method: Semi-Transparent

aniline dye pigmentation

Weight: 3.5 oz/sf (1068 gr/sm)

Hide Size: 20-25 square feet Hide

Thickness: 1.4-1.6 millimeters

Country of Origin: Italy

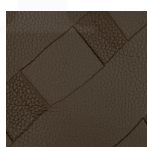
Note: This material exhibits natural markings and inherent colour and textural variations.



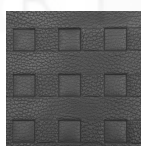
COLOURS



PATTERNS



STACCATO



BRIDGE



TRANSIT



BERLIN



ARRAN



CONFETTI

* In case of embossing you will have a repeat line every 150 cm



PAVONI

R | J

P O S T
M O D E R N

TECHNICAL PRODUCT SHEET (*Scheda Tecnica di prodotto*)

Article (<i>Articolo</i>)	<u>MALIBU</u>
Thickness (<i>Spessore</i>)	1,4 – 1.6 mm
Raw Material (<i>Tipo di Pelle</i>)	<u>Cow</u> (<i>Bovina</i>)
Origin (<i>Provenienza</i>)	Italy
Average Size (<i>Taglia</i>)	20-25 sq ft (<i>Pq</i>) Half hide
Tan Type (<i>Tipo Concia</i>)	<i>Chrome Tanning (Concia al Cromo)</i>
Finish Type (<i>Tipo Rifinitura</i>)	Nubuck
Embossing (<i>Stampa</i>)	<i>No Emboss (senza stampa)</i>
Appearance (<i>Aspetto</i>)	Conform to the Master

PHYSICAL CHARACTERISTICS

Caratteristiche Fisiche

Rubbing test (UNI EN ISO 11640) <i>Solidità allo strofinio</i>	50 dry felt cycles (<i>cicli a secco</i>) ≥ 3 grey scale (<i>scala dei grigi</i>) 20 wet felt cycles (<i>cicli ad umido</i>) ≥ 3 grey scale (<i>scala dei grigi</i>)
Measurement of tensile strength (UNI EN ISO 3376) <i>Resistenza alla trazione</i>	≥ 10 N/mm ²
Tear Resistance (UNI EN ISO 3377-2) <i>Resistenza allo strappo</i>	≥ 2000 N
Finish Adesion (UNI EN ISO 11644) <i>Adesione della rifinitura</i>	≥ 4.0 N/10mm
Abrasion Resistance (UNI EN ISO 5402-1) <i>Resistenza all'abrasione</i>	26.400 dry cycles (<i>cicli a secco</i>) 7.600 wet cycles (<i>cicli ad umido</i>)
Water vapour permeability (DIN 53333) <i>Permeabilità al vapor d'acqua</i>	≥ 5 mg/cmh
Flammability	Cigarette Test Certification

RYAN | JACKSON



R | J

**P O S T
M O D E R N**

MANDEVILLE

Characteristics

Content: 100% Calf Leather

Dye Method: Semi-Transparent
aniline dye pigmentation

Weight: 3.5 oz/sf (1068 gr/sm)

Hide Size: 20-25 square feet Hide

Thickness: 1.3-1.5 millimeters

Country of Origin: Italy

Note: This material exhibits natural
markings and inherent colour and textural
variations.



COLOURS



PATTERNS



STACCATO

BRIDGE

TRANSIT

BERLIN

ARRAN

CONFETTI

*** In case of embossing you will have a repeat line every 150 cm**



PAVONI

R | J

P O S T
M O D E R N

TECHNICAL PRODUCT SHEET (*Scheda Tecnica di prodotto*)

Article (<i>Articolo</i>)	<u>MANDEVILLE</u>
Thickness (<i>Spessore</i>)	1.3 – 1.5 mm
Raw Material (<i>Tipo di Pelle</i>)	<u>Cow</u> (<i>Bovina</i>)
Origin (<i>Provenienza</i>)	Italy
Average Size (<i>Taglia</i>)	22-25 sq ft (<i>Pq</i>) Half hide
Tan Type (<i>Tipo Concia</i>)	<i>Chrome Tanning (Concia al Cromo)</i>
Finish Type (<i>Tipo Rifinitzione</i>)	<i>Pigmented (Pigmentata)</i>
Embossing (<i>Stampa</i>)	<i>No Emboss (senza stampa)</i>
Apparence (<i>Aspetto</i>)	Conform to the Master

PHYSICAL CHARACTERISTICS

Caratteristiche Fisiche

Rubbing test (UNI EN ISO 11640) <i>Solidità allo strofinio</i>	500 dry felt cycles (<i>cicli a secco</i>) ≥ 4 grey scale (<i>scala dei grigi</i>) 80 wet felt cycles (<i>cicli ad umido</i>) ≥ 4 grey scale (<i>scala dei grigi</i>)
Measurement of tensile strength (UNI EN ISO 3376) <i>Resistenza alla trazione</i>	≥ 10 N/mm ²
Tear Resistance (UNI EN ISO 3377-2) <i>Resistenza allo strappo</i>	≥ 1200 N
Finish Adesion (UNI EN ISO 11644) <i>Adesione della rifinitzione</i>	≥ 2.0 N/10mm
Abrasion Resistance (UNI EN ISO 5402-1) <i>Resistenza all'abrasione</i>	50.000 dry cycles (<i>cicli a secco</i>) 20.000 wet cycles (<i>cicli ad umido</i>)
Flower stretching at cracking - ball method (UNI EN ISO 3379) <i>distensione del Fiore alla screpolatura (metodo della biglia)</i>	≥ 7 mm
Flammability	CAL TB-117 (2013, Sec. 1) BS 5852:1979 (source 0-1) BS EN 1021-1-2:2006

RYAN | JACKSON



R | J

**P O S T
M O D E R N**

PASADENA

Characteristics

Content: 100% Calf Leather

Dye Method: Semi-Transparent
aniline dye pigmentation

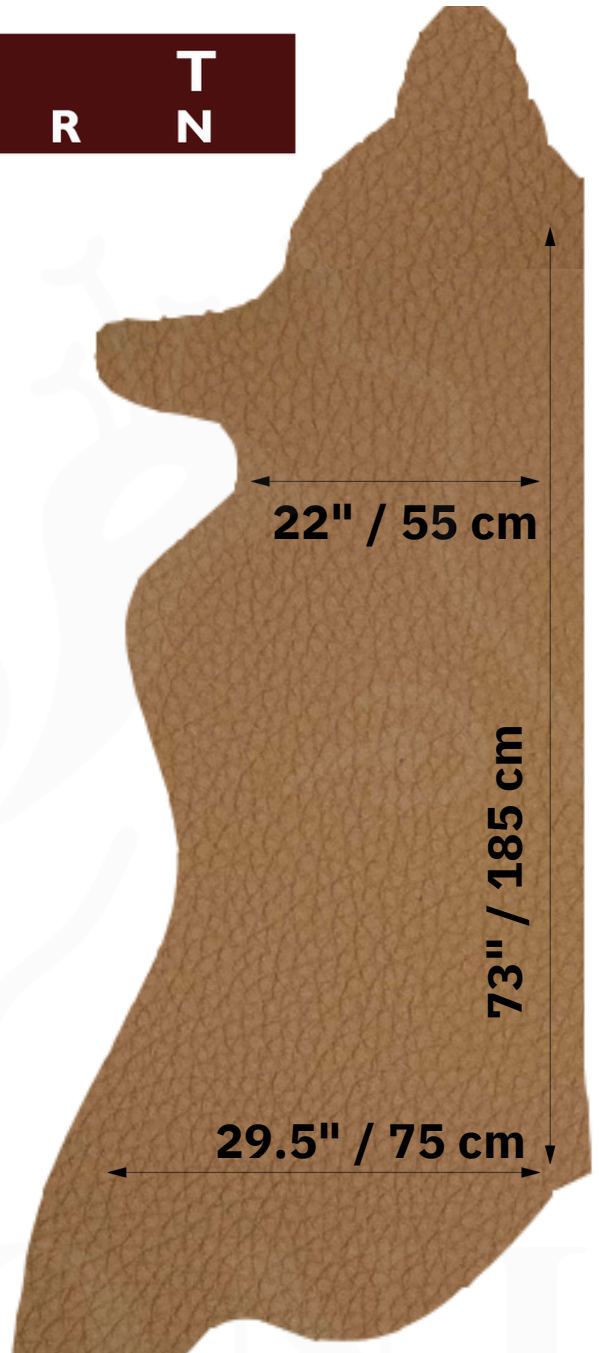
Weight: 3.5 oz/sf (1068 gr/sm)

Hide Size: 20-25 square feet Hide

Thickness: 1.2-1.4 millimeters

Country of Origin: Italy

Note: This material exhibits natural
markings and inherent colour and textural
variations.



COLOURS



PATTERNS



STACCATO

BRIDGE

TRANSIT

BERLIN

ARRAN

CONFETTI

* In case of embossing you will have a repeat line every 150 cm



PAVONI

R | J

P O S T
M O D E R N

TECHNICAL PRODUCT SHEET (*Scheda Tecnica di prodotto*)

Article (<i>Articolo</i>)	PASADENA
Thickness (<i>Spessore</i>)	1,2 – 1.4 mm
Raw Material (<i>Tipo di Pelle</i>)	Cow (<i>Bovina</i>)
Origin (<i>Provenienza</i>)	Italy
Average Size (<i>Taglia</i>)	20-25 sq ft (<i>Pq</i>) Half hide
Tan Type (<i>Tipo Concia</i>)	Chrome Tanning (<i>Concia al Cromo</i>)
Finish Type (<i>Tipo Rifinitzione</i>)	Pigmented (<i>Pigmentata</i>)
Embossing (<i>Stampa</i>)	No Emboss (<i>senza stampa</i>)
Apparence (<i>Aspetto</i>)	Conform to the Master

PHYSICAL CHARACTERISTICS

Caratteristiche Fisiche

Rubbing test (UNI EN ISO 11640) <i>Solidità allo strofinio</i>	500 dry felt cycles (<i>cicli a secco</i>) ≥ 4 grey scale (<i>scala dei grigi</i>) 250 wet felt cycles (<i>cicli ad umido</i>) ≥ 4 grey scale (<i>scala dei grigi</i>)
Measurement of tensile strength (UNI EN ISO 3376) <i>Resistenza alla trazione</i>	≥ 10 N/mm ²
Tear Resistance (UNI EN ISO 3377-2) <i>Resistenza allo strappo</i>	≥ 1200 N
Finish Adesion (UNI EN ISO 11644) <i>Adesione della rifinitzione</i>	≥ 2.0 N/10mm
Abrasion Resistance (UNI EN ISO 5402-1) <i>Resistenza all'abrasione</i>	50.000 dry cycles (<i>cicli a secco</i>) 20.000 wet cycles (<i>cicli ad umido</i>)
Water vapour permeability (DIN 53333) <i>Permeabilità al vapor d'acqua</i>	≥ 5 mg/cmh
Flammability	CAL TB-117 (2013, Sec. 1) BS 5852:1979 (source 0-1) BS EN 1021-1-2:2006

RYAN | JACKSON

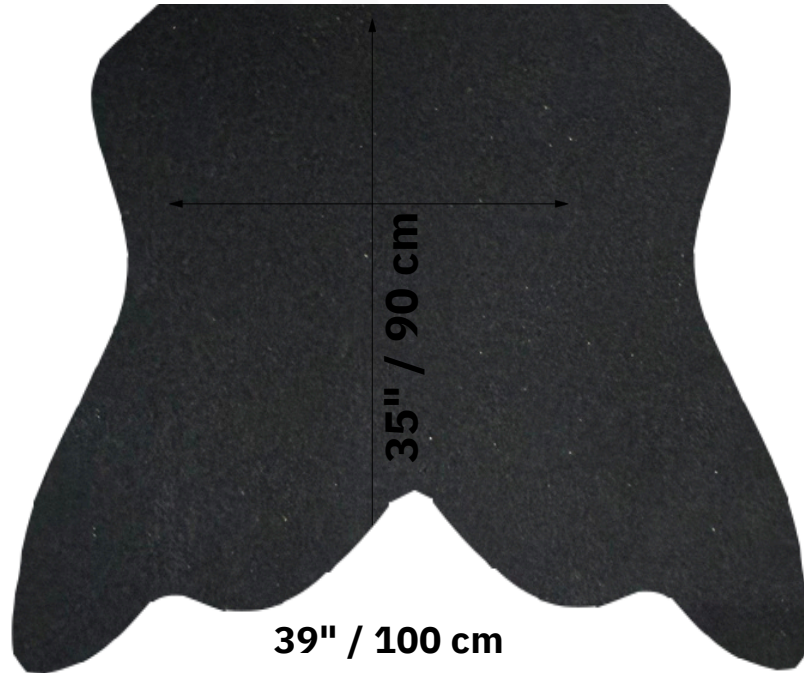


PAVONI

R | J

P O S T
M O D E R N

TROUSDALE



Characteristics

Content: 100% Suede Calf Leather

Dye Method: Semi-Transparent
aniline dye pigmentation

Weight: 3.5 oz/sf (1068 gr/sm)

Hide Size: 18 square feet Hide Thickness: 1.2-1.4
millimeters

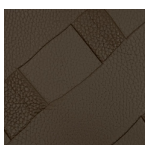
Country of Origin: Italy

Note: This material exhibits natural markings and inherent
colour and textural variations.

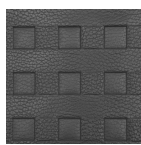
Available Colours



PATTERNS



STACCATO



BRIDGE



TRANSIT



BERLIN



ARRAN



CONFETTI



PAVONI

R | J

P O S T
M O D E R N

TECHNICAL PRODUCT SHEET (*Scheda Tecnica di prodotto*)

Article (<i>Articolo</i>)	<u>TROUSDALE</u>
Thickness (<i>Spessore</i>)	1,2 – 1.4 mm
Raw Material (<i>Tipo di Pelle</i>)	<u>Calf</u> (<i>Vitellina</i>)
Origin (<i>Provenienza</i>)	Italy
Average Size (<i>Taglia</i>)	18 sq ft (<i>Pq</i>) Calf hide
Tan Type (<i>Tipo Concia</i>)	<i>Chrome Tanning (Concia al Cromo)</i>
Finish Type (<i>Tipo Rifinitzione</i>)	Suede
Embossing (<i>Stampa</i>)	<i>No Emboss (senza stampa)</i>
Apparence (<i>Aspetto</i>)	Conform to the Master

PHYSICAL CHARACTERISTICS

Caratteristiche Fisiche

Rubbing test (UNI EN ISO 11640) <i>Solidità allo strofinio</i>	50 dry felt cycles (<i>cicli a secco</i>) ≥ 3 grey scale (<i>scala dei grigi</i>) 20 wet felt cycles (<i>cicli ad umido</i>) ≥ 3 grey scale (<i>scala dei grigi</i>)
Measurement of tensile strength (UNI EN ISO 3376) <i>Resistenza alla trazione</i>	≥ 10 N/mm ²
Tear Resistance (UNI EN ISO 3377-2) <i>Resistenza allo strappo</i>	≥ 1200 N
Finish Adesion (UNI EN ISO 11644) <i>Adesione della rifinitzione</i>	≥ 4.0 N/10mm
Abrasion Resistance (UNI EN ISO 5402-1) <i>Resistenza all'abrasione</i>	25.600 dry cycles (<i>cicli a secco</i>) 6.400 wet cycles (<i>cicli ad umido</i>)
Water vapour permeability (DIN 53333) <i>Permeabilità al vapor d'acqua</i>	≥ 5 mg/cmh
Flammability	Cigarette Test Certification

RYAN | JACKSON